

Hybrid Learning Plans--Mount View





OUR PROMISE

Every student in Highline Public Schools is known by **name, strength and need**, and graduates prepared for the **future they choose.**

Agenda: What Families Need to Know about hybrid school

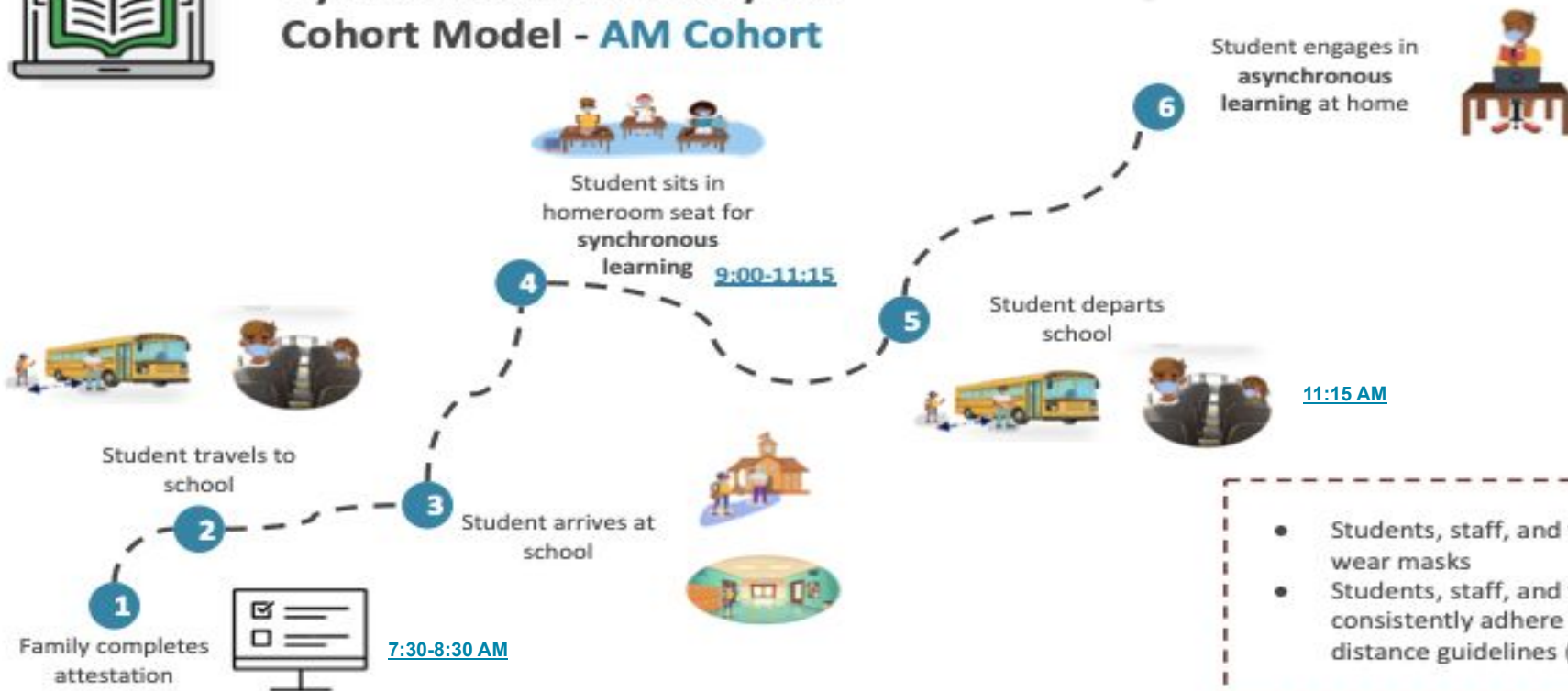
1. The schedule
 2. Routines for arrival and departure.
 3. Safety protocols
 4. Classrooms and learning
 5. Q and A with teachers and leaders
- [You can learn detailed information about our safety plan at this link.](#)





Hybrid Instruction: AM/PM Cohort Model - **AM Cohort**

AM Group: 9:00-11:15



- Students, staff, and families wear masks
- Students, staff, and families consistently adhere to social distance guidelines (6-ft)



Hybrid Instruction: AM/PM Cohort Model - PM Cohort

PM Group: 1:45-4:00



12:00-1:00PM

Family completes attestation

Student engages in asynchronous learning at home



Student arrives at school



Student travels to school



Student departs school

Student sits in homeroom seat for Synchronous learning

1:45-4:00



- Students, staff, and families wear masks
- Students, staff, and families consistently adhere to social distance guidelines (6-ft)

Attestation (Health Screening)



All students must have a completed **daily** health screening form, also called an attestation.

1. The health screening form must be completed on the day the student will attend
2. Please submit this at least 30 minutes prior to the start of school

If you check **yes** to any of the questions on the form that are not due to a pre-existing condition, please do not send any students in your household to school.

[Online form](#)



Uniforms 2020 - 2021

Uniforms will NOT be required in school for the remainder of the 2020-21 school year.



Keeping your information up-to-date is important!



- Have you changed your phone number or email address?
- Have you moved?
- Has your student had any health changes in the last year?
- Do we have the correct emergency contacts on file?



All Families must verify information before returning to Hybrid learning!

Transportation Plan

We will follow these safety practices on school buses:

- Masks are required.
- Students will maintain the greatest distance possible on the bus. Students from the same household will be seated together whenever possible.
- All fans will be set to “outside air” and run constantly.
- Windows will be open for ventilation to the maximum feasible based on weather conditions.
- Roof vents will be open at all times.
- Buses will run powered fresh air exchange.



Meals for Students

- Meals will continue to be free to all children ages 1 to 18 and all Highline students. No ID, application or proof of income is required. Children do not need to be present at pickup.
- During Hybrid learning: NO MEALS SERVED AT SCHOOL.
- Starting March 1, our meal distribution will change. We will no longer provide daily meal pick-ups.

Mondays: 7-Day Meal Kits will be available at Evergreen High School.
7:30-8:30 AM, 12:30-1:30 PM, 3:00-4:00 PM

Wednesdays: 2-day or 5-day meal kits at Mount View. 11:30-12:45



Please pre-order on the Highline website:

<https://www.highlineschools.org/return-to-learn/meals-for-students>

Visitors

We  our
Visitors!





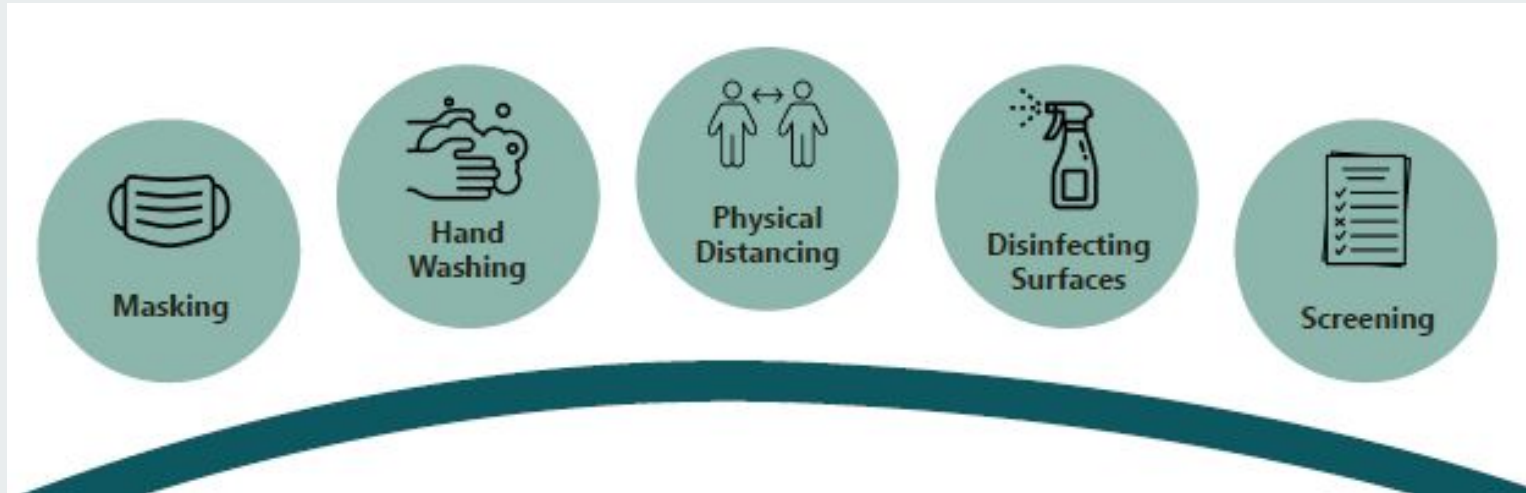
A Day at school

What it will look like for kids

<https://vimeo.com/513467713>



State/District Safety Recommendations



Prepare your child(ren) for the 1st day of hybrid:

- Teach the 3Ws
- Remember to eat breakfast or lunch before coming to school
- Practice wearing a mask at home

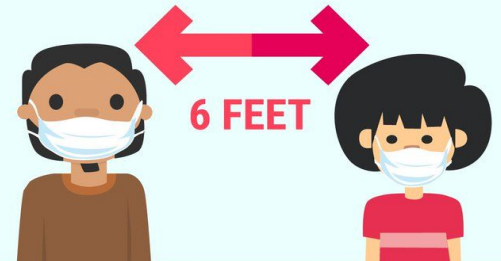
**Wear
a facemask**



**Wash
your hands**

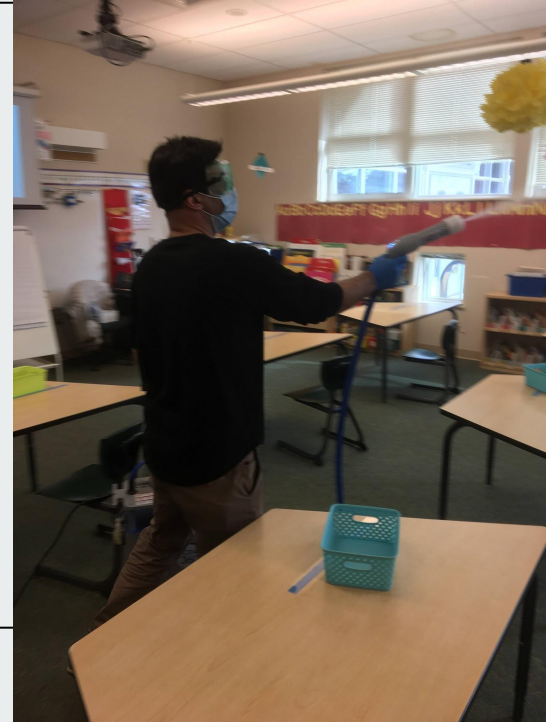


**Watch
your distance**



Cleaning

- Air is circulated throughout every classroom every 8-10 minutes. Also, windows will mostly be open.
- Bathrooms cleaned every hour.
- Between each group of kids there is an electrostatic sprayer used to clean the air particles.
- There is surface cleaner available for staff and students.
- The school is deep-cleaned every Wednesday.



Masking

Make sure the mask covers your mouth AND Nose



Masks must be worn by all people who are on our campus.



Hand Washing

- Sanitize hands when entering the building.
- Wash hands when entering a classroom.
- Wash hands after using the restroom.



Before Arrival--Attestation

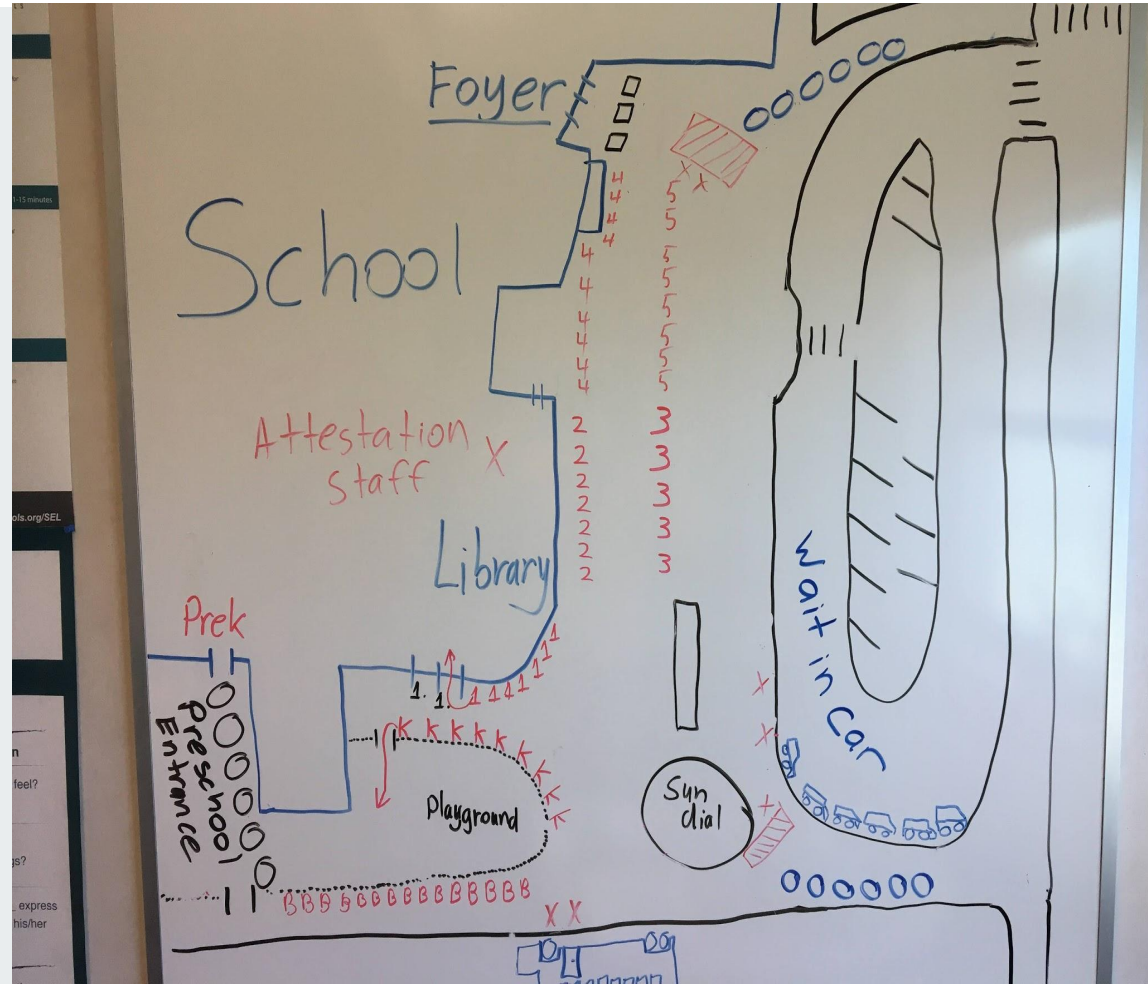
- Attestation form links will be sent out every morning to remind parents to complete them.
 - A parent may complete a paper form if not done online
- Parents complete one form per student.
- Forms need to be completed 30 minutes prior to the start of school.
- A school list of students whose forms are completed will be at all of the arrival stations, so we can check off who is clear.

Link to attestation form for bookmarking is [here](#).

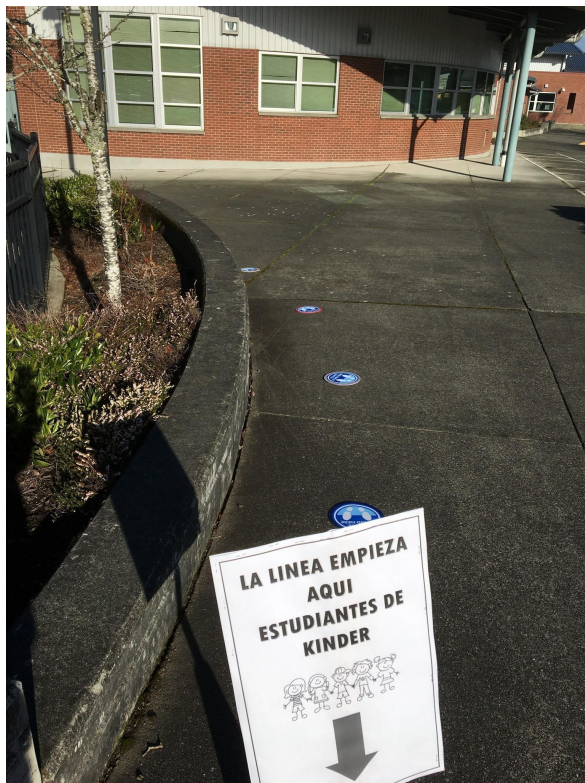


Arrival

Greeters with an “attestation complete” list will be at bus, car, and walking drop off zones. Parents should not get out of their cars. Walking parents will say goodbye at an attestation table. Students will walk to their grade level line and then be walked into the building by staff members.



Arrival and Travel



Bathrooms

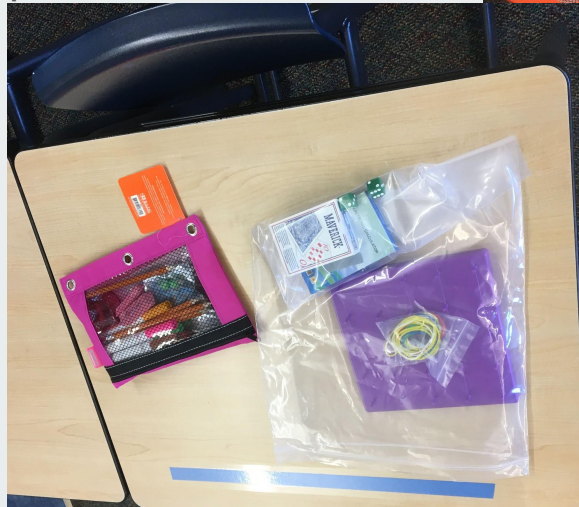


Classrooms



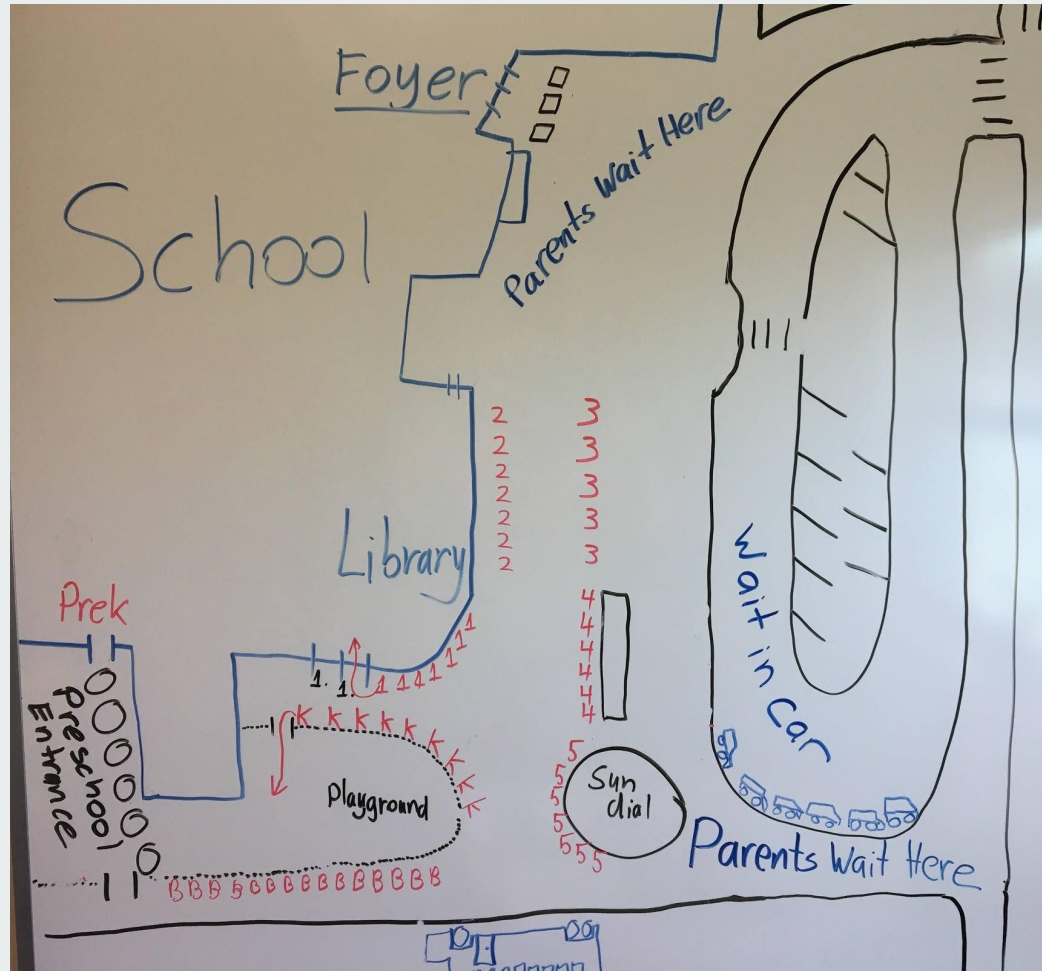
Materials

- Computers should come to school everyday.
- Each student's school supplies will be provided.
- Learning materials in class will be in student's individual bag.
- NO shared supplies, except books which will be used on a rotation.



Dismissal

Teachers will walk students out to designated lines. Staff will greet parents in their cars or in the distanced lines, retrieve students, and bring students to you. *Adults are not to come to the student lines.* Please wait in vehicle or in designated lines.



Illness

If a staff member or student reports a positive test or close contact with a person testing positive we will:

1. Conduct contract tracing.
2. Contact any student/staff member exposed.
3. Isolation or quarantine will be required based on

King County Department of Health Guidelines



When Can I Be Around Others Again?

ISOLATION (If you are sick)

You can be around others after:

- 24 hours with no fever **AND**
- 10 days since symptoms first appeared **AND**
- Other symptoms have improved

QUARANTINE (If you've had known exposure)

You can be around others after:

- A full 14 day quarantine after last contact with exposure (safest option) **OR**
- A 10 day quarantine after last contact with exposure **OR**
- A 7 day quarantine after last contact with exposure **WITH** a test on day 5, **IF** test is negative

Dual Language Hybrid Instruction

What's New, What's Different



Instrucción “hybrid” en el programa de dos idiomas

Qué hay de nuevo, Qué es diferente

February 2021 / Febrero 2021

Teaching in Both Languages

Enseñanza en ambos idiomas

Options for Language of Instruction

5th Grade: Half-day in
English/Half-day in Spanish

or

4th Grade: Two days in
English/Two days in Spanish

Opciones para el idioma de instrucción

Opción 1: Medio día en inglés /
Medio día en español

o

Opción 2: Dos días en inglés /
Dos días en español



At-Home Learning / Aprendizaje en casa

195 minutes total

45 min: PE/ Music/ Library (online)

30-40 min: Math Practice*

30-40 min: Literacy Practice*

20-30 min: Independent Reading

45 min: iReady/ Istation/ Imagine Learning

****Math and literacy practice will match the language it was taught in that day.***



195 minutos en total

45 min: PE/ Música/ Biblioteca (en línea)

30-40 min: Tarea de matemáticas*

30-40 min: Tarea de lectura/escritura*

20-30 min: Lectura independiente

45 min: iReady/ Istation/ Imagine Learning

****Las tareas de matemáticas, lectura y escritura serán asignados en el idioma en que fue enseñando ese día.***

At-Home Literacy Strategies

Estrategias de alfabetización en el hogar

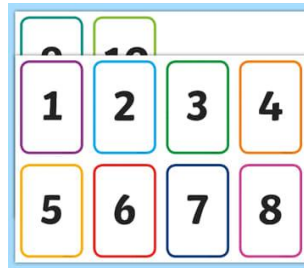
- SeeSaw activities
- Independent reading - book bag from school
- Handwriting practice
- Writing in journal
- Writing Projects
- iReady / Istation
- Actividades en SeeSaw
- Lectura independiente - bolsa de libros
- Práctica de escritura a mano
- Escribir en cuaderno
- Proyectos de escritura
- iReady / Istation



At-Home Math Strategies

Estrategias matemáticas en casa

- Math practice on Seesaw or in notebook
- Number cards to practice/play games - from at-home kits
- Math games
- iReady Lessons
- Práctica de matemáticas en SeeSaw o en un cuaderno
- Tarjetas numéricas para practicar / jugar: de las materiales para el hogar
- Juegos de matemáticas
- Lecciones de iReady





Breakout Q and A with Teachers

If you have a general question about safety, arrival or dismissal please do not go to the breakout room with the grade level teachers.

